

# Absea Product data sheet

<b>Product number</b>	010707D09
<b>Antibody specificity</b>	Granulocyte-macrophage colony-stimulating factor (GM-CSF)
<b>Species reactivity</b>	Human
<b>UniProt/GenelD</b>	P04141/1437
<b>Clone number</b>	KT37
<b>Immunogen</b>	Recombinant human GM-CSF
<b>Antibody isotype</b>	Rat IgG2a
<b>Antibody form</b>	Intact antibody
<b>Concentration</b>	1 mg/ml in PBS containing 0.09% sodium azide as a preservative
<b>Cross-reactivity</b>	Not tested
<b>Applications</b>	Capture antibody in sandwich ELISA (paired with KT35/HRP)

These are applications that have been tested. It does not mean that the antibody cannot be used for other applications.

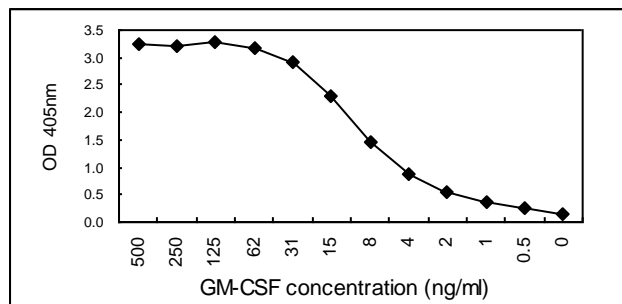


Figure 1. Sandwich ELISA using KT37 and KT35/HRP pairs

<b>Suggested working concentrations</b>	Sandwich ELISA: 1-3 $\mu$ g/ml
<b>Preparation</b>	Antibody is purified from culture supernatant using a protein G column
<b>Store</b>	4 °C for 1 month, -20 °C or -80°C in aliquots. Avoid repeated freeze/thaw cycles.
<b>Safety information</b>	This product contains sodium azide which is hazardous