

# Absea Product data sheet

<b>Product number</b>	030106B08
<b>Antibody specificity</b>	Pro-epidermal growth factor (EGF)
<b>Species reactivity</b>	Human
<b>UniProt/GenelD</b>	P01133/1950
<b>Clone number</b>	KT57
<b>Immunogen</b>	Recombinant human EGF
<b>Antibody isotype</b>	Mouse IgG1
<b>Antibody form</b>	Intact antibody
<b>Concentration</b>	1 mg/ml in PBS containing 0.09% sodium azide as a preservative
<b>Cross-reactivity</b>	Not tested
<b>Applications</b>	Primary antibody for ELISA and Western blotting; capture antibody for Sandwich ELISA (paired with KT2/HRP)

These are applications that have been tested. It does not mean that the antibody cannot be used for other applications.

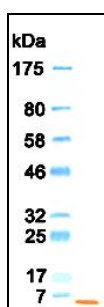


Figure 1. Western blotting result

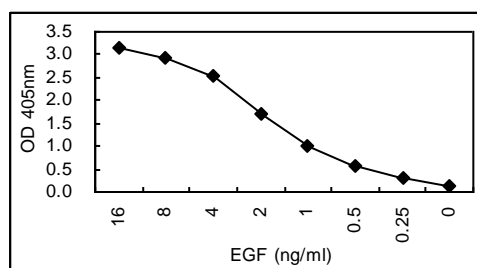


Figure 2. Sandwich ELISA using KT57 coated plate and HRP conjugated KT2.

<b>Suggested working concentrations</b>	ELISA: 1 $\mu$ g/ml Western blotting: 1/500 - 1/5000 Sandwich ELISA: 0.5-2 $\mu$ g/ml for coating plates  Optimal concentrations should be determined by the end user
<b>Preparation</b>	IgG is purified through a Protein A column
<b>Store</b>	4 °C for 1 month, -20 °C or -80°C in aliquots. Avoid repeated freeze/thaw cycles
<b>Safety information</b>	This product contains sodium azide which is hazardous