

Absea Product data sheet

Product number	030501A08
Antibody specificity	Cytotoxic T-lymphocyte protein 4 (CTLA-4, CTLA4)
Species reactivity	Human
UniProt/GenelD	P16410/1493
Clone number	KT56
Immunogen	Recombinant human CTLA-4
Antibody isotype	Mouse IgG1
Antibody form	Intact antibody
Concentration	1 mg/ml in PBS containing 0.09% sodium azide as a preservative
Cross-reactivity	Not tested
Applications	Primary antibody for Western blotting; capture antibody for sandwich ELISA (paired with KT50/HRP)

These are applications that have been tested. It does not mean that the antibody cannot be used for other applications

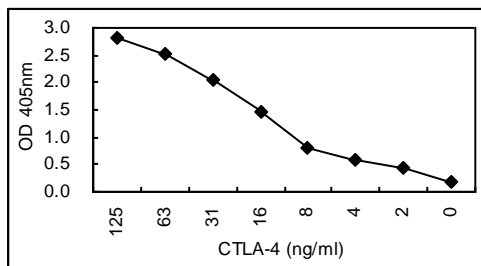


Figure 1. Sandwich ELISA using KT56 coated plate and HRP conjugated KT50.

Suggested working concentrations	Sandwich ELISA: 5 µg/ml for coating plates Western blotting: 1/500 - 1/10000 Optimal concentrations should be determined by the end user
Preparation	IgG is purified through a Protein A column
Store	4 °C for 1 month, -20 °C or -80°C in aliquots. Avoid repeated freeze/thaw cycles
Safety information	This product contains sodium azide which is hazardous