

# Absea Product data sheet

<b>Product number</b>	030502B05
<b>Antibody specificity</b>	Interleukin-6 (IL-6, IL6)
<b>Species reactivity</b>	Human
<b>UniProt/GenelD</b>	P05231/3569
<b>Clone number</b>	KT105
<b>Immunogen</b>	Recombinant human IL-6
<b>Antibody isotype</b>	Mouse IgG2b
<b>Antibody form</b>	Intact antibody
<b>Concentration</b>	1 mg/ml in PBS containing 0.09% sodium azide as a preservative
<b>Cross-reactivity</b>	Not tested
<b>Applications</b>	Primary antibody for ELISA and Western blotting, capture antibody for sandwich ELISA (paired with KT106/HRP)

These are applications that have been tested. It does not mean that the antibody cannot be used for other applications

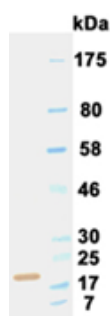


Figure 1. Western blotting result

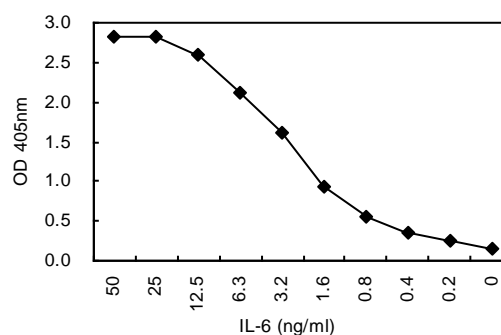


Figure 2. Sandwich ELISA using KT105 and KT106/HRP pairs

<b>Suggested working concentrations</b>	ELISA: 1/1000 Western blotting: 1/500 – 1/5000 Sandwich ELISA: 5 µg/ml for coating plates  Optimal concentrations should be determined by the end user
<b>Preparation</b>	IgG is purified through a Protein A column
<b>Store</b>	4 °C for 1 month, -20 °C or -80°C in aliquots. Avoid repeated freeze/thaw cycles
<b>Safety information</b>	This product contains sodium azide which is hazardous