

Absea Product data sheet

Product number	030304G11
Antibody specificity	Fibroblast growth factor 2 (FGF2, bFGF)
Species reactivity	Human
UniProt/GenelD	P09038/2247
Clone number	KT1
Immunogen	Recombinant human bFGF
Antibody isotype	Mouse IgG1
Antibody form	Intact antibody
Concentration	1 mg/ml in PBS containing 0.09% sodium azide as a preservative
Cross-reactivity	Not tested
Applications	Primary antibody for ELISA and Western blotting; capture antibody for sandwich ELISA (paired with KT49/HRP)

These are applications that have been tested. It does not mean that the antibody cannot be used for other applications

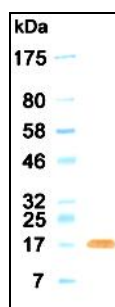


Figure 1. Western blotting result

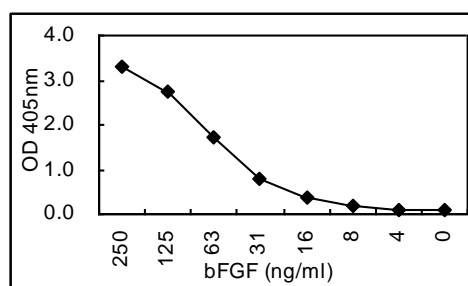


Figure 2. Sandwich ELISA using KT1 coated plate and HRP conjugated KT49.

Suggested working concentrations	ELISA: 1 μ g/ml Western blotting: 1/500 - 1/10000 Sandwich ELISA: 5 μ g/ml for coating plates Optimal concentrations should be determined by the end user
Preparation	IgG is purified through a Protein A column
Store	4 °C for 1 month, -20 °C or -80°C in aliquots. Avoid repeated freeze/thaw cycles
Safety information	This product contains sodium azide which is hazardous