

Absea Product data sheet

Product number	030509C07H
Antibody specificity	Cytotoxic T-lymphocyte protein 4 (CTLA-4, CTLA4)
Species reactivity	Human
UniProt/GenelD	P16410/1493
Clone number	KT50
Immunogen	Recombinant human CTLA-4
Antibody isotype	Mouse IgG2a
Antibody form	Intact antibody labelled with horseradish peroxidase
Concentration	1 mg/ml in PBS containing 0.01% thimerosal as a preservative
Cross-reactivity	Not tested
Applications	Detection antibody for sandwich ELISA (paired with KT56)

These are applications that have been tested. It does not mean that the antibody cannot be used for other applications

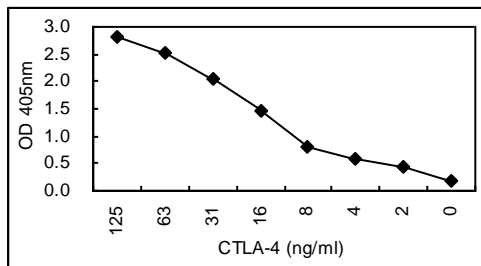


Figure 1. Sandwich ELISA using KT56 coated plate and HRP conjugated KT50.

Suggested working concentrations	Sandwich ELISA: 1/1000 - 1/2000 Optimal concentrations should be determined by the end user
Preparation	IgG is purified through a Protein A column and labelled with horseradish peroxidase
Store	4 °C for 1 month, -20 °C or -80°C in aliquots. Avoid repeated freeze/thaw cycles
Safety information	This product contains thimerosal which is hazardous