

# Absea Product data sheet

<b>Product number</b>	030516G02
<b>Antibody specificity</b>	Granulocyte colony-stimulating factor (G-CSF)
<b>Species reactivity</b>	Human
<b>UniProt/GenelD</b>	P09919/1440
<b>Clone number</b>	KT27
<b>Immunogen</b>	Recombinant human G-CSF
<b>Antibody isotype</b>	Mouse IgG2a
<b>Antibody form</b>	Intact antibody
<b>Concentration</b>	1 mg/ml in PBS containing 0.09% sodium azide as a preservative
<b>Cross-reactivity</b>	Not tested
<b>Applications</b>	Primary antibody for ELISA and Western blotting

These are applications that have been tested. It does not mean that the antibody cannot be used for other applications

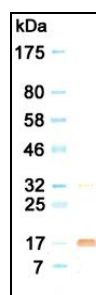


Figure 1. Western blotting result

<b>Suggested working concentrations</b>	ELISA: 1 $\mu$ g/ml Western blotting: 1/500 – 1/10000  Optimal concentrations should be determined by the end user
<b>Preparation</b>	IgG is purified through a Protein A column
<b>Store</b>	4 °C for 1 month, -20 °C or -80°C in aliquots. Avoid repeated freeze/thaw cycles
<b>Safety information</b>	This product contains sodium azide which is hazardous